



MAGNESIUM

MULTI-STRAND HOT TOP VERTICAL DIRECT CHILL ROD (VDC) CASTING TOOLING FOR MAGENSIUM

Hatch Hot Top Vertical Direct Chill (VDC) Casting Tooling enables safe, simultaneous casting of multiple strands with a single metal delivery pump or with no pumps whatsoever where induction melting is used. The billet surface finish and metallurgical quality is superior to conventional open mould casting of magnesium billets. Hatch has designed, fabricated and installed multi-strand Hot Top mould tooling for both alloy billet and commercial purity T-Bar.

Hatch is the only firm in the world that can supply the Multi-Strand Hot Top Vertical Direct Chill (VDC) Casting Tooling technology. This technology is of significant commercial benefit to any firm that wishes to produce high quality extrusion billet, rolling slab or T-ingot at a high production rate. High product quality means improved downstream processing performance and high productivity means smaller facility size, capital cost and reduced operating cost. Automatic operation means greater safety.

Hatch offers the most advanced technologies and equipment capabilities for magnesium casting including:

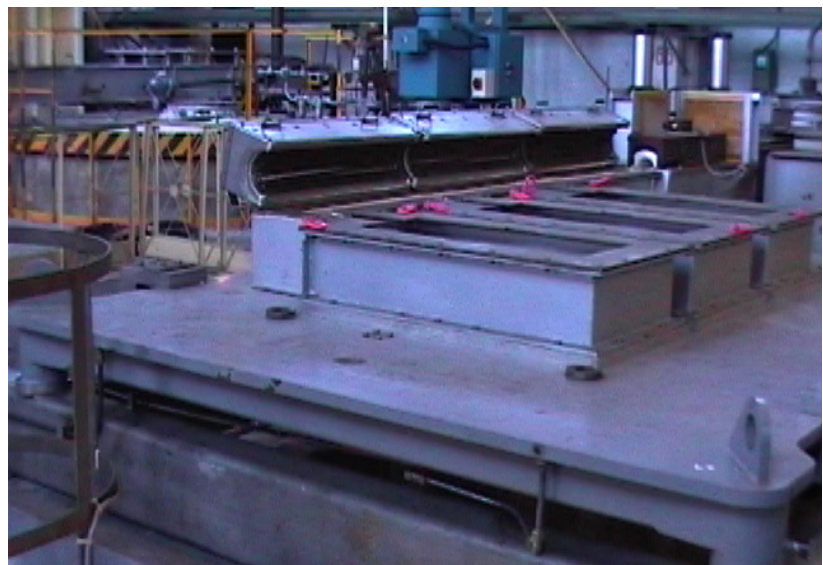
- Multi-strand Hot Top billet tooling for diameters up to 500 mm
- Multi-strand Hot Top T-bar in LME standard formats
- Continuous linear feed lubrication system
- Safe casting system with automatic incident detection and response.



Magnesium T-Bar cast using Hatch Hot Top Tooling technology, at the AVISMA facility; Berezniki, Russia



Surface quality of 458-mm M1 billet cast using Hatch Hot Top Casting Technology



3-Strand Hatch Hot Top Tooling for Mg T-Bar production at the AVISMA facility in Berezniki, Russia

CONTACTS

Phil Baker
+ 1 514 864 5500
pbaker@hatch.com.au

Peter Forakis
+1 514 864 5500
pforakis@hatch.ca